

Our Life with MSA

Jack & Carol Harrigan

Denville New Jersey

Diagnosis

- Symptoms began roughly 8 years ago
- Diagnosed in 2013 with Cerebellar Ataxia
- Diagnosed in 2015 with MSA

Impact on Lifestyle

- MSA is a family disease
- Career to Disability to Retirement
- Change in Activity Level/Involvement
- Home move /Renovations
- Shifting Responsibilities within Family
- Social Changes

Evolving Mindset

- At Diagnosis (denial, hope)
- With Disease Progression (acceptance, hope)
- Expectations for the Future (reality, hope)
- **HOPE IS A CONSTANT!**

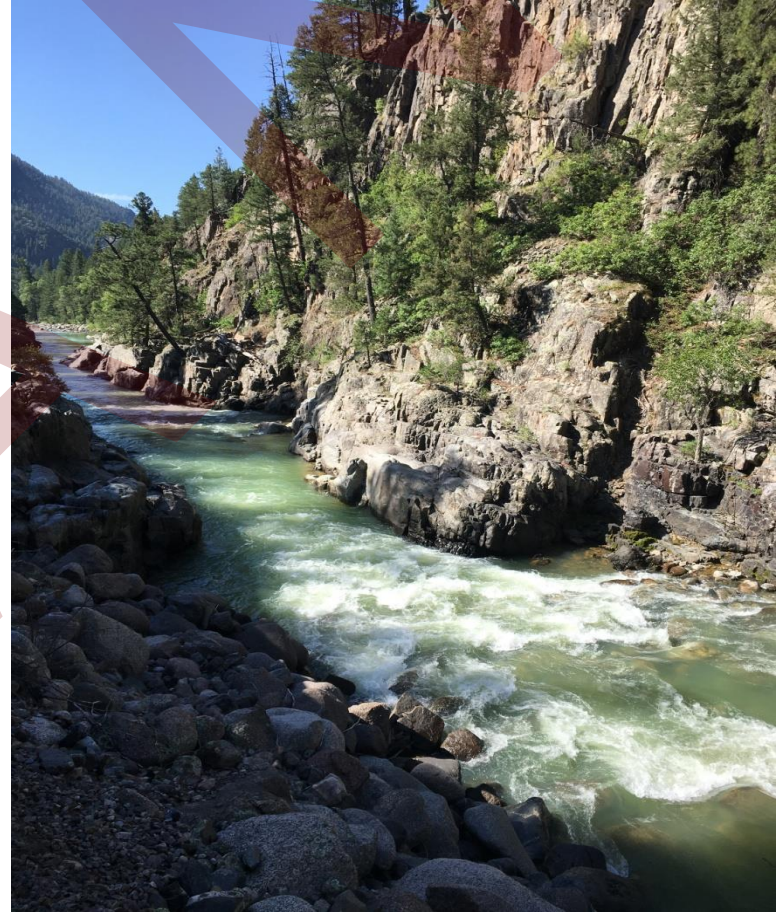
How we are Living with MSA

- Clinical Trials & Research Studies
- Adaptive Devices to Make Life Easier
- New Interests & Hobbies
- Friends & Family
- Humor!
- Planning

Our Inspiration

don't let
WHAT YOU CAN'T DO
interfere with what
YOU
CAN DO!

USA Cross Country Trip



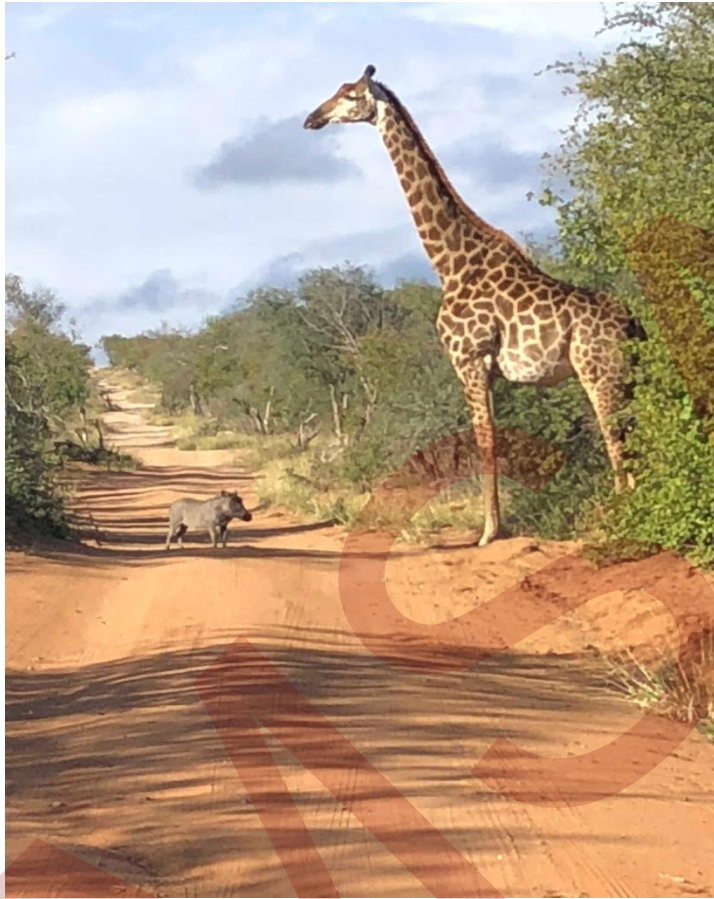
USA Cross Country Trip



South Africa Safari



South Africa Safari



South Africa Safari



South Africa Safari



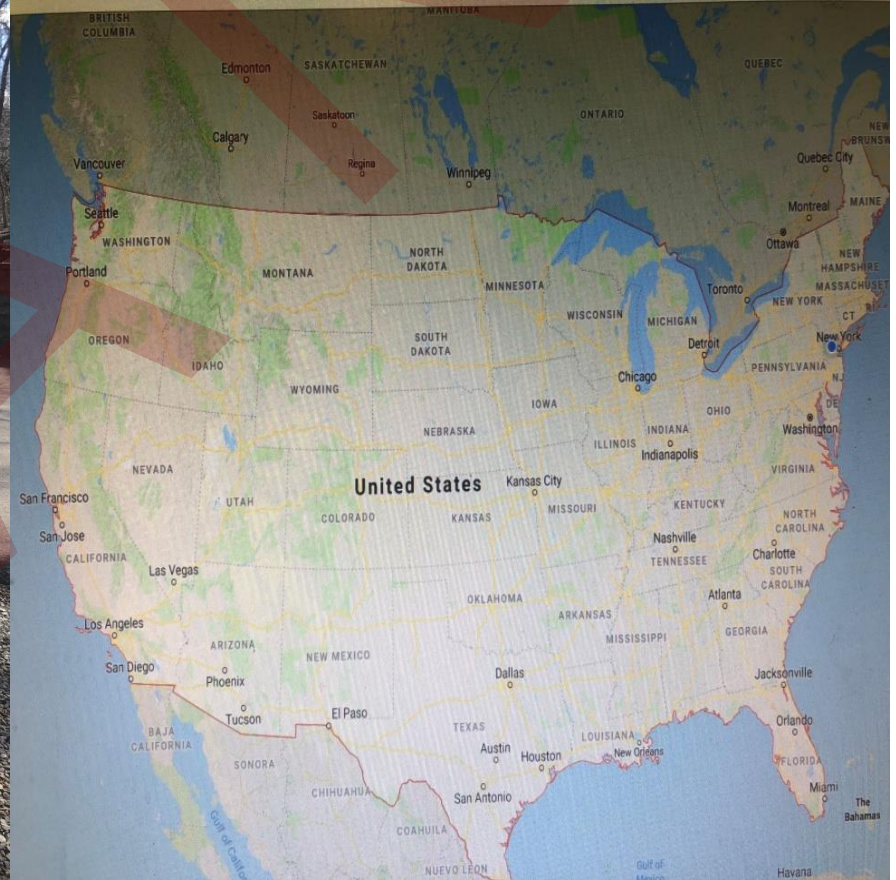
Maui Getaway



Maui Getaway



What's Next???



Our Continued Inspiration

don't let
WHAT YOU CAN'T DO
interfere with what
YOU
CAN DO!